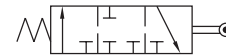
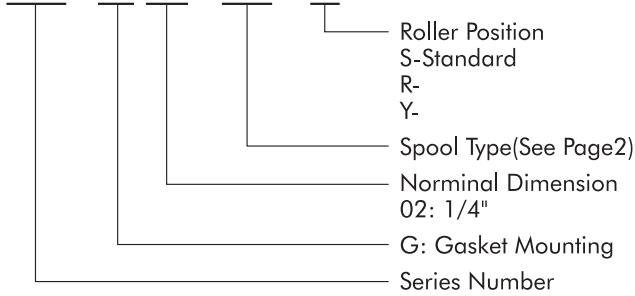




# Cam Operated Directional Valves

## HOW TO ORDER

**DC - G 02 - B2 - R**



## SPECIFICATIONS

Model No.	Max. Pressure kgf/cm <sup>2</sup>	Max. Back Pressure kgf/cm <sup>2</sup>	Max. Flow LPM	Weight kg
DC-G02-B2-10	210	70	30	1.3

## ATTACHMENT

Model No.	Soc Hol Cap Screw	Tightening Torque
DC-G02	M5 x 45L.....4pcs	50-70 kgf/cm <sup>2</sup>

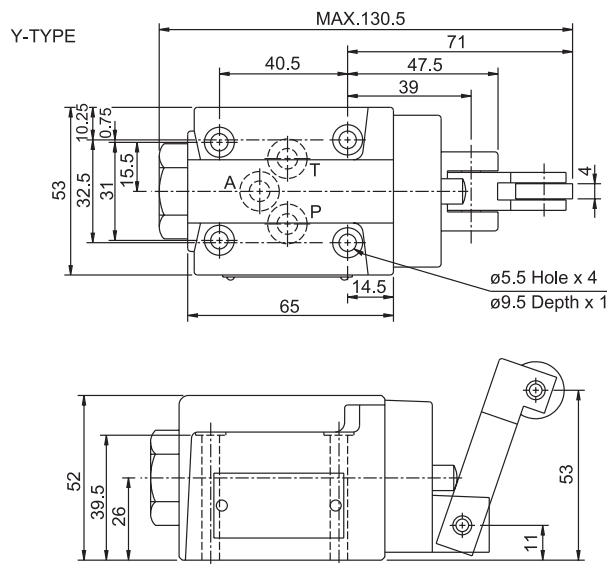
## DIRECTION OF OIL FLOW FOR ROLLER POSITION

Model No.	Symbol	Roller Position vs. Flow (mm)
DC-G02-B2-10		P → A All Closed A → T 0      4.2      10      16

## INSTALLATION DIMENSIONS:

UNIT: mm

**DC-G02-2B-10** Mounting Surface: ISO 4401-03-02-0-94



## PERFORMANCE CURVES

Test Fluid Viscosity: 35 cSt

Test Temperature: 50 °C

